



# Survivor CL4040

## Anodized Aluminum Industrial Luminaire



### GENERAL INFORMATION

Mounting Module	Z track system (standard) Busbar bracket system (optional) Angle bracket system (optional) Earthquake hanger system (optional)
Operating Temperature	-20 °C / +40°C (standard) -20 °C / +80°C (optional, HOT PLUS) -40 °C / +65°C (optional, COLD PLUS)
Storage Temperature	-40°C / +80°C
Class Mounting Options	Tool-free clips system
LED Modules	Removable / Replaceable optical unit
Lens Options	30° (High-Bay), 60° (Mid-Bay), 90° (Low-Bay) (Standard), 120° (Extra Low-Bay), 39°x90° (Corridor), Project-specific lens selection (optional)

Main Reference / Company Standards	EN 60598-1, EN 60598-2-1, EN 62471, EN 60068-2-11, EN 60068-2-52, ISO 9227, ASTM B117, ASTM D3359-78, ISO 4628-2, ISO 4628-4, EN 60529, EN 62262, ANSI C136.10-2017, ANSI C136.2-2018, EN 62031, IEC 62384, ASTM D3359, EN ISO 2409, IES LM 80-15, IES LM 82-12, IES LM 84, 14, IES LM 85-14, IES TM 21-11, ISO 9001, ISO 14001, ISO 18001, ISO 5001, TS EN/ISO 17025
------------------------------------	---

### HOUSING AND MATERIALS

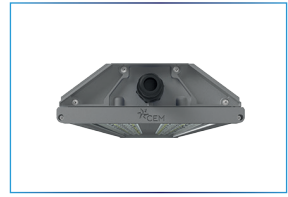
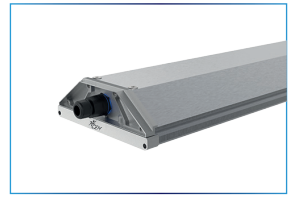
Housing	Corrosion resistant aluminum extrusion
Cap	Glass-fibre UV stabilized, auto extinguishing recyclable polymer (RAL7035)
Hinge System	Anodized aluminum
Optic	PMMA or PC
Gasket	Silicon or polyurethane without junction points
Refractor	Tempered glass min. 4mm high transparency UV resistant (optional) Tempered glass with security film (optional)
Connector	5 pin terminal connector
Standard Colour	RAL830 Anti-microbial (optional) Project-specific colour selection
Tightness Level	IP66
Impact Housing Resistance	IK10 (20 J)
Impact Glass Resistance	IK09 (standart) (10 J), IK10 (opsiyonel) (20 J)
Vibration test	IEC 68-2-6 (0.5G), ANSI C136.31 (3G-5G)

### ELECTRICAL INFORMATION

Electrical Class	Class I, Class II (optional)
Nominal Voltage	220-240V 50/60 Hz EU 110-277V 50/60 Hz (optional) NORTH AMERICA
Led Current	250mA, 350mA, 400 mA, 450mA, 500mA, 600mA, 700mA, 900mA, 1050mA, 1200mA
Power Factor	≥0.9 (at full load)
Driver	Constant current, Thermal protected, Voltage regulated, Harmonic filter protection
Surge Protection Options (kV)	6 kV (optional) 10 kV (optional) with LED signal and thermo fuse to disconnect load at the end of life 20 kV (optional) with LED signal and thermo fuse to disconnect load at the end of life
Control System	on-off (standard), Bluetooth, DALI, 1-10V DIM, Stand alone automation
Socket	NEMA 4-pin (ZHAGA book 18) (optional) NEMA 5-pin (ANSI C136.41) (optional) NEMA 7-pin (ANSI C136.41) (optional)
Sensor	PIR (optional), Photocell (optional), Daylight (optional)
Mains Connection	For cable max section 2,5 mm2 Outgoing cable H05RN-F 2/3/5 x 1,5 mm2 Length on request. (optional)
Electromagnetic Compatibility (EMC)	IEC 61000, EN 55015, IEC 61000-3-2, IEC 61000-4-5, IEC 61547, IEC 61000-3-3, IEC 61000-4-2, IEC 61000-2-2, IEC 61000-4-11, IEC 61643-11

### OPTICAL INFORMATION

Led Colour Temperature	2700K (warm white), 3000K (warm white), 4000K (neutral white) (standard), 5000K (cool white), 5700K (cool white), 6500K (cool white)
Colour Rendering Index (CRI)	CRI ≥80 CRI ≥90 (optional)
Upward Light Output Ratio (ULOR)	0%
Photobiological safety class	IEC 62471, EN 62778 EXEMPT GROUP
Testing standard	LM 79-19, EN 13032-1, EN 13032-2, (all measurements in ISO17025 accredited laboratory)
Lifetime of the LEDs	Tq = 25°C, >102.000h - L70 Tq = 55°C, >102.000h - L70



www.cemdag.com  
cemdag@cemdag.com  
+90 232 444 4 236  
CEM

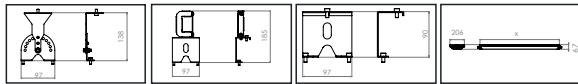
# Survivor CL4040

## Anodized Aluminum Industrial Luminaire



Number of Power LED's / Rating / Current	Luminaire Output Flux (lm) max.	W (mm) min.	W (mm)	L (mm)	h (mm)	Item / Box	Average Weight (kg)	Order Code	System Lumen / W (lm) max.	min.
72 / 25W / 450mA	4750	3625	206	314	67	1	3.0	L4040-LED02025NW-ECC	190	145
72 / 61W / 1100mA	11590	8845	206	314	67	1	3.0	L4040-LED02061NW-ECC	190	145
144 / 39W / 350mA	7410	5655	206	586	67	1	4.5	L4040-LED04039NW-ECC	190	145
144 / 44W / 400mA	8360	6380	206	586	67	1	4.5	L4040-LED04044NW-ECC	190	145
144 / 72W / 650mA	13680	10440	206	586	67	1	4.5	L4040-LED04072NW-ECC	190	145
144 / 106W / 950mA	20140	15370	206	586	67	1	4.5	L4040-LED04106NW-ECC	190	145
216 / 34W / 200mA	6460	4930	206	858	67	1	6.0	L4040-LED06034NW-ECC	190	145
216 / 50W / 300mA	9500	7250	206	858	67	1	6.0	L4040-LED06050NW-ECC	190	145
216 / 58W / 350mA	11020	8410	206	858	67	1	6.0	L4040-LED06058NW-ECC	190	145
216 / 67W / 400mA	12730	9715	206	858	67	1	6.0	L4040-LED06067NW-ECC	190	145
216 / 92W / 550mA	17480	13340	206	858	67	1	6.0	L4040-LED06092NW-ECC	190	145
216 / 108W / 650mA	20520	15660	206	858	67	1	6.0	L4040-LED06108NW-ECC	190	145
216 / 133W / 800mA	25270	19285	206	858	67	1	6.0	L4040-LED06133NW-ECC	190	145
216 / 158W / 950mA	30020	22910	206	858	67	1	6.0	L4040-LED06158NW-ECC	190	145
216 / 183W / 1100mA	34770	26535	206	858	67	1	6.0	L4040-LED06183NW-ECC	190	145
288 / 67W / 300mA	12730	9715	206	1130	67	1	8.0	L4040-LED08067NW-ECC	190	145
288 / 77W / 350mA	14630	11165	206	1130	67	1	8.0	L4040-LED08077NW-ECC	190	145
288 / 89W / 400mA	16910	12905	206	1130	67	1	8.0	L4040-LED08089NW-ECC	190	145
288 / 100W / 450mA	19000	14500	206	1130	67	1	8.0	L4040-LED08100NW-ECC	190	145
288 / 122W / 550mA	23180	17690	206	1130	67	1	8.0	L4040-LED08122NW-ECC	190	145
288 / 144W / 650mA	27360	20880	206	1130	67	1	8.0	L4040-LED08144NW-ECC	190	145
288 / 210W / 950mA	39900	30450	206	1130	67	1	8.0	L4040-LED08210NW-ECC	190	145
288 / 233W / 1050mA	44270	33785	206	1130	67	1	8.0	L4040-LED08233NW-ECC	190	145
360 / 83W / 300mA	15770	12035	206	1402	67	1	10.0	L4040-LED10083NW-ECC	190	145
360 / 97W / 350mA	18430	14065	206	1402	67	1	10.0	L4040-LED10097NW-ECC	190	145
360 / 111W / 400mA	21090	16095	206	1402	67	1	10.0	L4040-LED10111NW-ECC	190	145
360 / 125W / 450mA	23750	18125	206	1402	67	1	10.0	L4040-LED10125NW-ECC	190	145
360 / 153W / 550mA	29070	22185	206	1402	67	1	10.0	L4040-LED10153NW-ECC	190	145
360 / 291W / 1050mA	55290	42195	206	1402	67	1	10.0	L4040-LED10291NW-ECC	190	145

Depending on the luminaire configuration. For more details, please contact us.  
Tolerance on LED flux is +/-7% and on total luminaire power +/- 5%.



[www.cemdag.com](http://www.cemdag.com)  
[cemdag@cemdag.com](mailto:cemdag@cemdag.com)  
 +90 232 444 4 236  
**CEM**

Cemdag reserve the right to modify design and/or production characteristics of their products, photographs and data used in this catalogue are for illustrative purposes are not binding on the company.

The copying or reproduction, in part or in full, of any descriptions, technical data drawings or photographs shown in this catalogue is expressly forbidden.

### Main Applications

